



LINE 4_A

VOLUME 19

MAY - JUNE 2024



Co-funded by the
European Union



ELLINIKO METRO S.A.

MINISTRY OF
INFRASTRUCTURE
AND TRANSPORT



PROJECT: LINE 4A "ALSOS VEIKOU - GOUDI"

GALATSI Station

VEIKOU TBM SHAFT - TBM "NIKI"

Page 2

At the VEIKOU TBM shaft, the construction progress (excavation, temporary support, drainage) stands at 71.62%.

Additionally, the assembly of the construction crane and the creation of the TBM muck area on the surface of the construction site is underway.

At the same time, the last supporting gantries No. 3 and No. 4 are being assembled with the rest of the machine within the pit.

Furthermore, the assembly of the conveyor system continues with the installation of the inclined cross section.

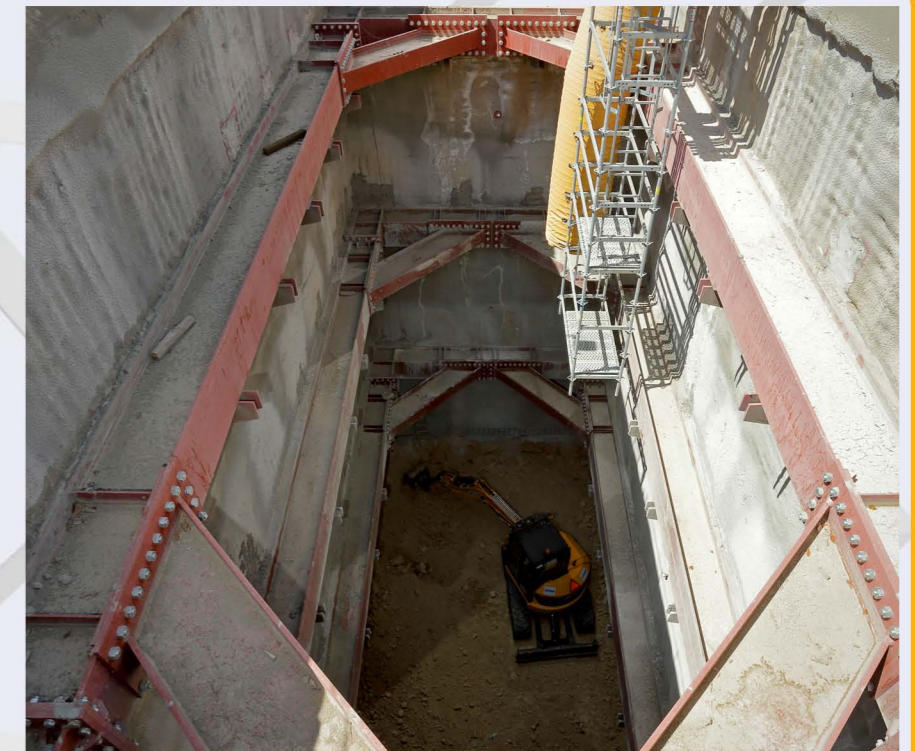


VEIKOU TBM Shaft.

EYDAP SHAFT

Page 3

The excavation of the EYDAP Shaft is continuing using the hydraulic hammer of the 4th level. The construction progress reaches 58.65%



Excavation of the 4th level - EYDAP Shaft.

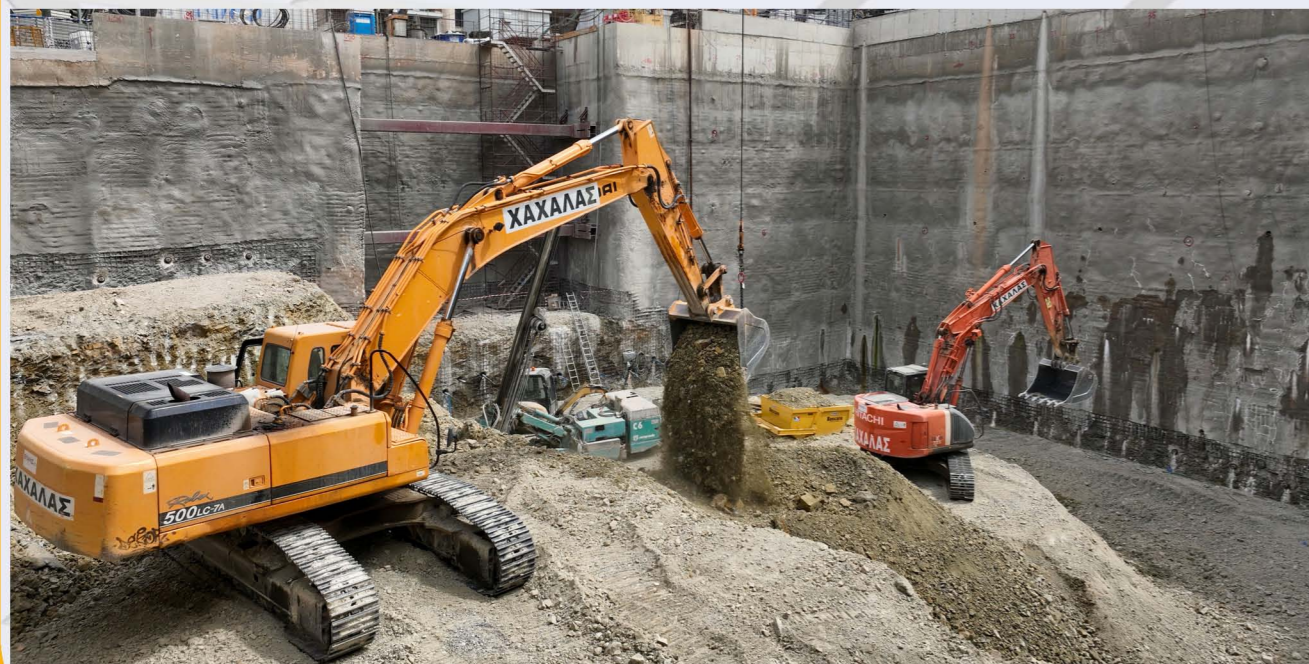
DIKASTIRIA STATION

Page 4



Drilling of anchors and excavation - DIKASTIRIA Station.

At the DIKASTIRIA Station, the excavation percentage of the main trench reaches 51.5%, and at the same time, the gradual construction and drilling of the anchors continues up to the 7th level.



Excavation at the 7th level at the DIKASTIRIA Station.

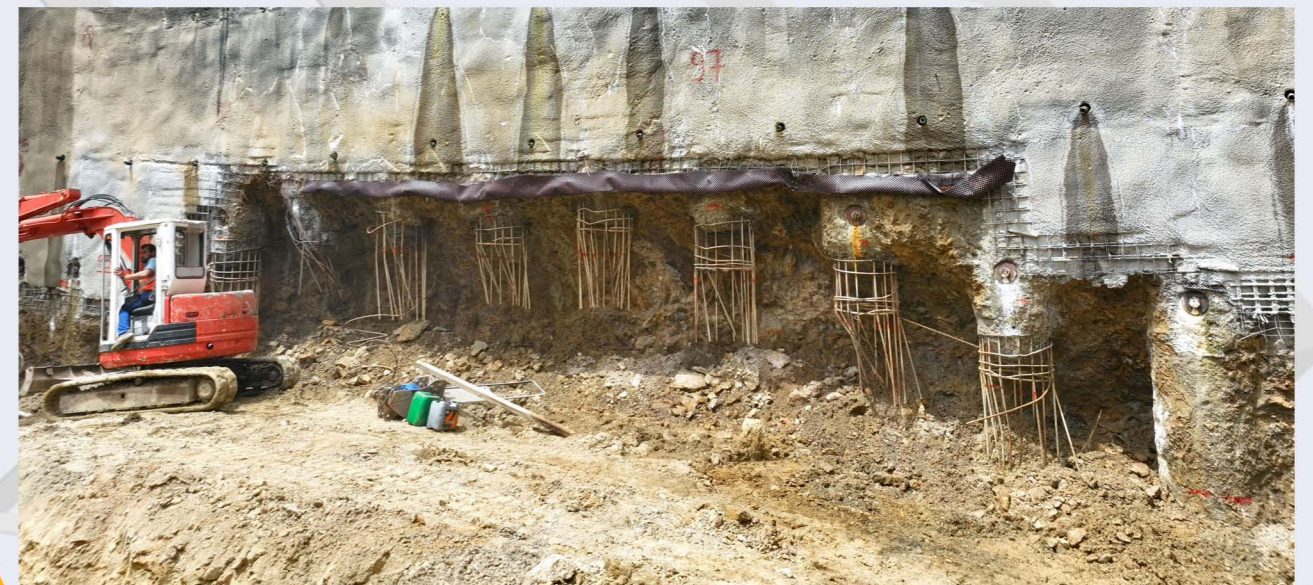
KOLONAKI STATION

Page 5



KOLONAKI Station.

At the KOLONAKI Station, the excavation percentage of the central trench is 60.50%, and excavation is underway in the Northern Section up to the 6th level. Meanwhile, the completion percentage of the tensioning of the prestressed anchors of the central trench at the Station reaches 45.89%.



Preparation for the construction of the entrance of the connecting tunnel at the KOLONAKI Station.

AKADIMIA STATION

Page 6



Excavation of the central trench - AKADIMIA Station.

At the AKADIMIA Station, excavation of the 3rd level of the central trench is underway, with the completion percentage of the excavations reaching 36.22%. Meanwhile, the completion percentage of the tensioning of the prestressed anchors of the central trench at the Station is 46.76%, which corresponds to 159 out of 340 anchors.

EVANGELISMOS TRUMPET SHAFT



Preparatory work at the EVANGELISMOS TRUMPET Shaft.

During May, the fountain located within the EVANGELISMOS TRUMPET Shaft was disassembled and removed. At the same time, work on site facilities continues with the pouring of a clean concrete layer at the entrances of the construction site. Additionally, fencing was installed on Naiadon Street to implement traffic regulations, and the construction of the DEDDHE low voltage Pillar base was completed.

GNA SHAFT

Page 7



Connecting gallery - GNA Shaft.



Excavation of access chamber - GNA Shaft.

At the GNA Shaft, the A' Phase and B' Phase of the excavation of the 20.5m access chamber have been completed, and the excavation of Phase A of the first section of the connecting tunnel is set to begin immediately. The tunnel to be constructed will connect the GNA Shaft with the Supervisor's tunnel and will be 186.02 meters long (including the Access Chamber).



KESSARIANI Station

GALATSI STATION

Page 8

The construction of the piles at the GALATSI Station is ongoing, with 24 out of the 79 piles already completed. Additionally, the implementation of the Phase A traffic regulation has begun, and the construction site fencing on ProtoPapadaki Street has been extended.

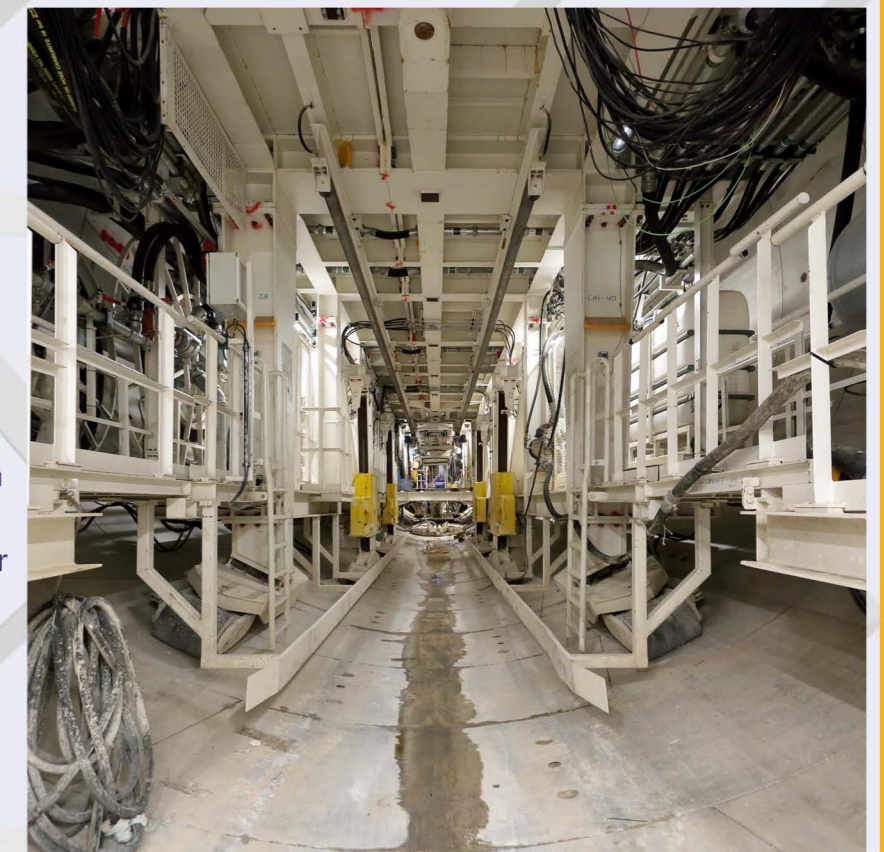


Drilling of piles - GALATSI Station.

TBM "ATHENA"

Page 9

The TBM "ATHENA" has excavated 639.89m of the 762.66m of the 2nd Intermediate Section (DIKAIOSINIS Shaft - GOUDI Station), with the excavation progress reaching 83.90%. At the end of June, the TBM made a brief stop for inspection and documentation of the wear on the cutting discs of the head, as well as for their replacement under hyperbaric conditions. The excavation progress of the TBM "ATHENA" towards the EVANGELISMOS TRUMPET Shaft, where it will stop, is at 27.62%.



TBM "ATHENA".

PROJECT: PRELIMINARY WORKS



KIPSELI Station



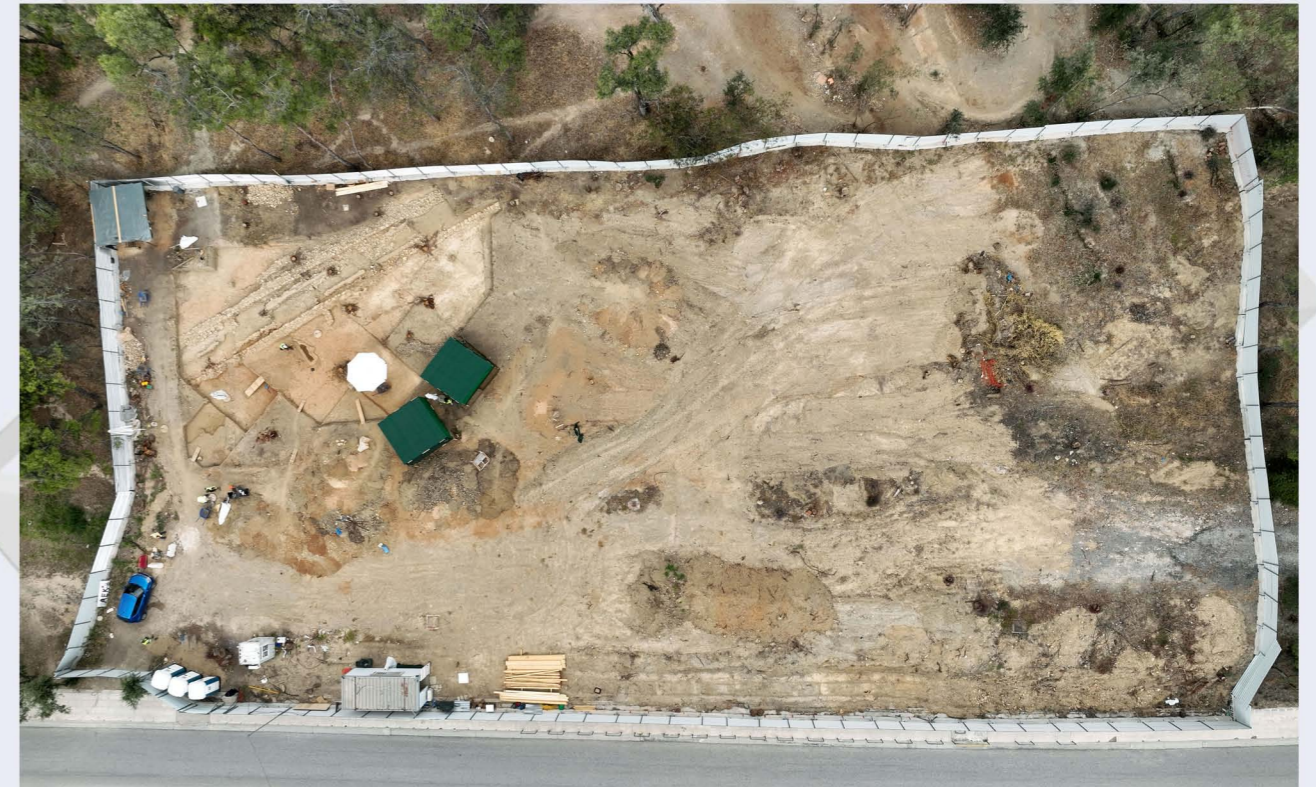
MINISTRY OF
INFRASTRUCTURE AND
TRANSPORT



WITH CO-FINANCING OF GREECE AND THE EUROPEAN UNION

ARCHAEOLOGICAL WORKS

Page 11



Archaeological works at the PANEPISTIMIOUPOLI Station.

RELOCATION OF NETWORKS

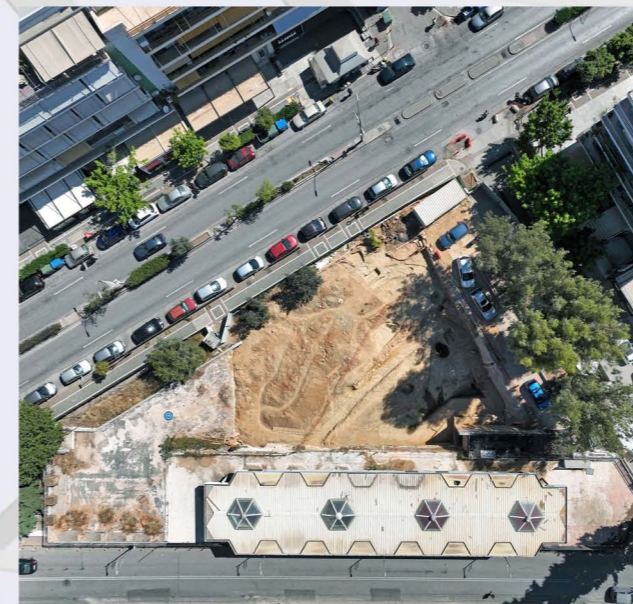
Page 10



KIPSELI Station.

At the KIPSELI Station works for the diversion of DEDDIE networks are being carried out. Simultaneously, at the ILISSIA Station, the diversions of DEDDIE and OTE networks have commenced. Additionally, at the KESSARIANI Station, the relocation of EYDAP networks continues, while at the ZOGRAFOU Station, works for the diversion of OTE networks are taking place.

Archaeological works are continuing at the stations KIPSELI, EXARCHIA, KESSARIANI, PANEPISTIMIOUPOLI, ZOGRAFOU and at the ventilation shaft of AGIOS THERAPONTAS near the ZOGRAFOU Station.



Archaeological works at the ZOGRAFOU Station.



Archaeological works at the KIPSELI Station.

ELLINIKO METRO S.A.



LINE

A LANDMARK PROJECT BECAMES REAL!

www.emetro.gr/grammi4

NEWSLETTER LINE 4A

LINE 4A PHOTOS
Savvas Spyridonos

**All photos used have been taken from the archives of ELLINIKO METRO S.A. (unless stated otherwise).*

***Cover page photo: KOLONAKI Station.*

Contact us on: 210-6792065, 210-6792060 | E-mail: info@emetro.gr



Co-funded
by the
European
Union



MINISTRY OF
INFRASTRUCTURE
AND TRANSPORT