



LINE 4_A

VOLUME 20

JULY - AUGUST 2024



Co-funded by the
European Union



MINISTRY OF
INFRASTRUCTURE
AND TRANSPORT

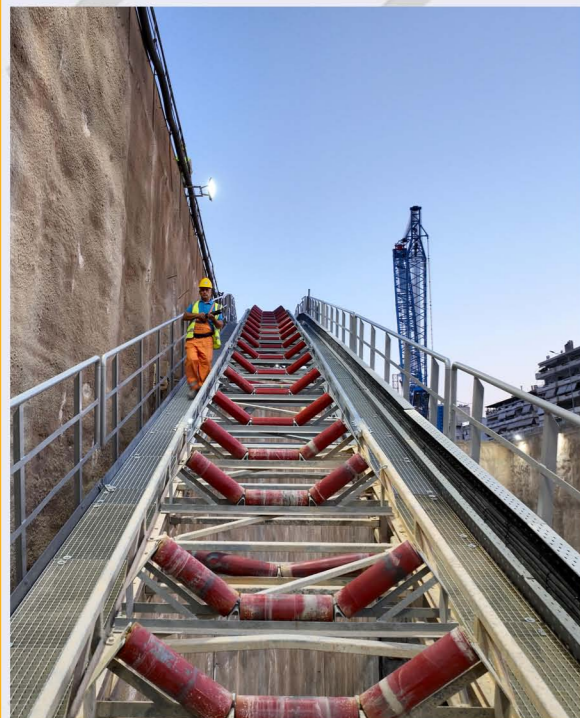


PROJECT: LINE 4A "ALSOS VEIKOU – GOUDI"

VEIKOU TBM SHAFT

VEIKOU TBM SHAFT - TBM «NIKI»

Page 2



Conveyor belt assembly - TBM Veikou Shaft.

In the VEIKOU TBM Shaft, the completion percentage of the construction works (excavation works, temporary retaining, drainage) has reached 75.41%.

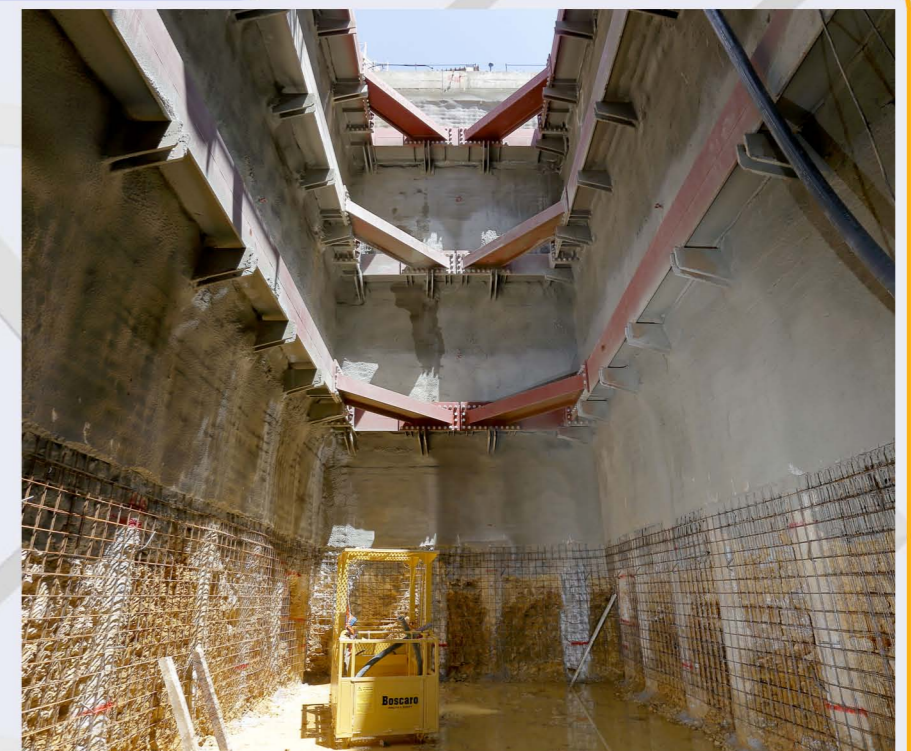
Moreover, the construction of the excavation spoils depositing area and the construction of the water management system have been completed.

At the same time, the assembly of the back-up gantries no. 3 and 4 by TBM "NIKI" has been completed, and the TBM "NIKI" has already bored 44.34m out of 472.54m at the 1st Interstation.

Moreover, the assembly of the conveyor belt has been completed. Its operation started immediately after the completion of the tests of conveyor belts C1, C2, C3. Finally, protective grids and balustrades have been installed.

EYDAP SHAFT

Page 3



Excavation of the 4th level - EYDAP Shaft.

The excavation work for the EYDAP Shaft is continuing. A hydraulic hammer is being used on the 4th level. The construction progress has reached 58.65%.

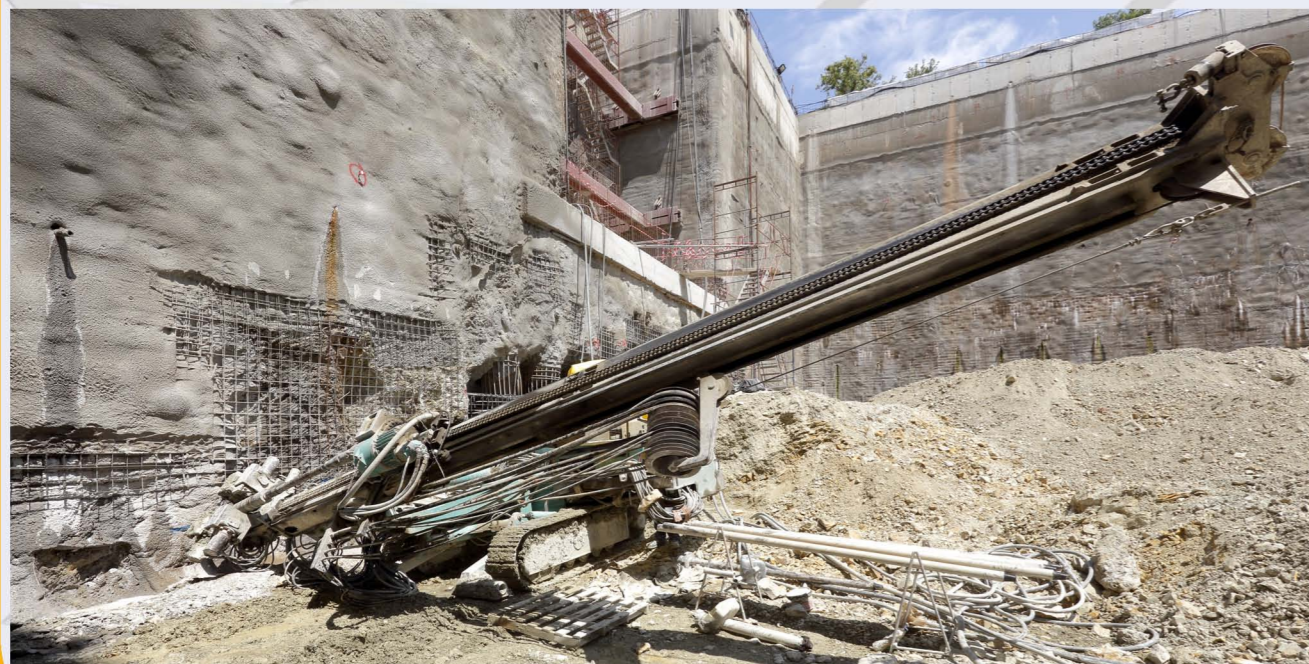
DIKASTIRIA STATION

Page 4



Drilling of anchors and excavation - DIKASTIRIA Station.

In DIKASTIRIA Station, the excavation percentage of the central trench has reached 59.6%. The gradual construction and drilling of the anchors up to the 9th level is continuing.



Drilling of anchors - DIKASTIRIA Station.

KOLONAKI STATION

Page 5



KOLONAKI Station

At KOLONAKI Station, the excavation percentage of the central trench has reached 72.9%. Excavation work is currently in progress in the central section of the trench at the 7th level. Meanwhile, the completion percentage for the tensioning of the pre-stressed anchors in the central trench of the Station has reached 57.03%.



Drilling of anchors - KOLONAKI Station.

AKADIMIA STATION

Page 6



Excavation of the central trench – AKADIMIA Station.

At AKADIMIA Station, excavation work is in progress for the 5th level of the central trench. The completion percentage of the excavation works at the central trench has reached 56.48%.

Additionally, the tensioning of the pre-stressed anchors in the central trench is nearing completion, with a completion percentage of 71.76%. Specifically, 244 out of 340 anchors have been successfully tensioned.

VIVLIOTHIKI SHAFT

The VIVLIOTHIKI Shaft is located on Akadimias Street, adjacent to AKADIMIAS Station, and serves as a natural ventilation shaft. Following the completion of preliminary works in the Shaft, the arrival of the boring machine and lifting crane enabled the immediate commencement of piling work. Currently, 11 out of 46 piles have been constructed, resulting in a completion percentage of 23.91%.



Drilling of piles – VIVLIOTHIKI Shaft.

EVANGELISMOS TRUMPET SHAFT

Page 7

In July, piling work commenced in the EVANGELISMOS TRUMPET Shaft. Currently, 18 out of the 74 piles have been bored. Additionally, the statue of Chateaubriand has been transported to the junction of Michalakopoulou and Niriidon Streets, following the recommendation of the Municipality of Athens.



Drilling of piles - EVANGELISMOS TRUMPET Shaft.

GNA SHAFT



Connecting gallery – GNA Shaft.

Excavation of Phase A in the GNA Shaft, which is divided into sections A1 and A2, has commenced for the first section of the Forestation Tunnel. As of now, the progress percentage for Phase A1 is 23.11% (43 out of 186.02 meters), while Phase A2 has achieved a progress percentage of 11.80% (22 out of 186.02 meters).

The tunnel being bored will connect GNA Shaft with the Katehaki Trumpet Tunnel, with a total length of 599.48m, including the Access Chamber.

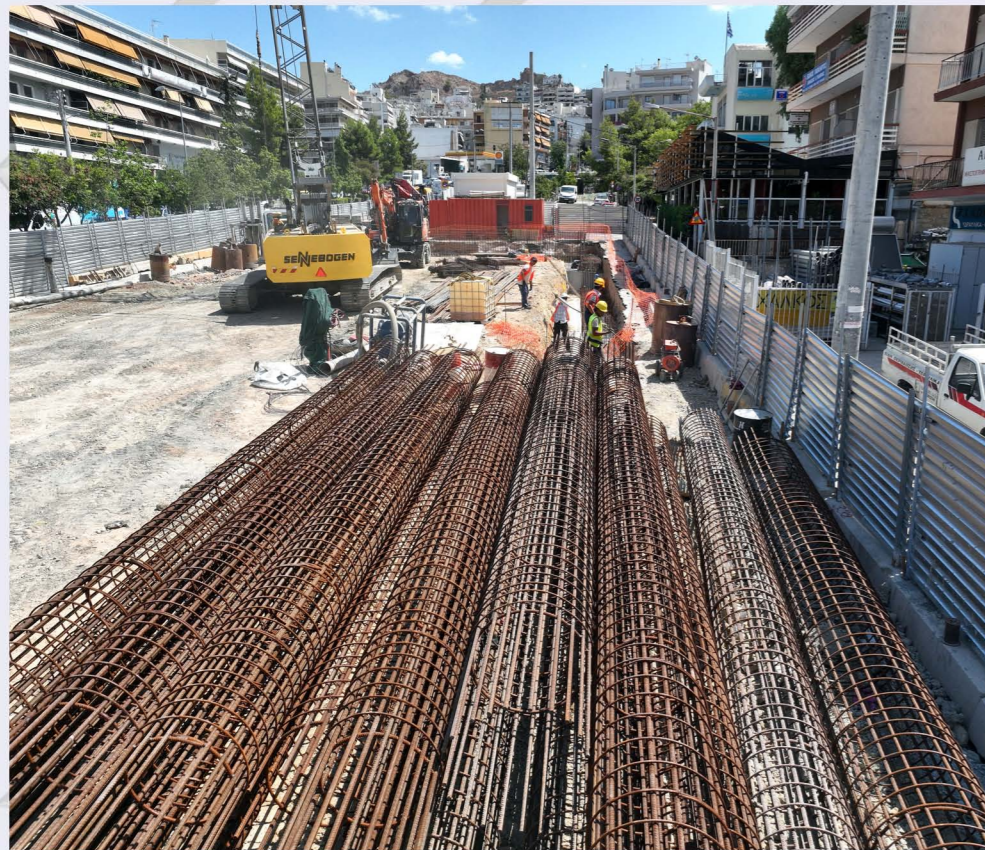


GALATSI Station

GALATSI STATION

Page 8

Piling work at the GALATSI Station is currently in progress, with 49 out of 79 piles already bored. Additionally, the construction of the pile cap beam in the main trench has reached a progress percentage of 26.8% (33m/123m).

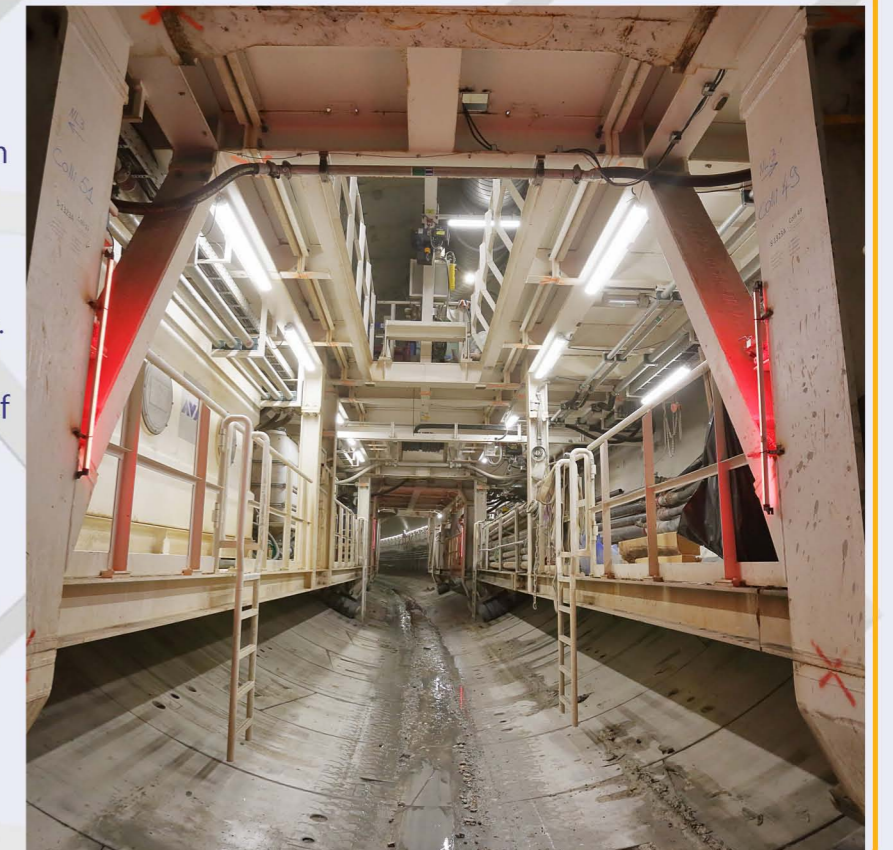


Construction of cages – GALATSI Station.

TBM "ATHENA"

Page 9

The TBM "ATHENA" has bored 358.58m out of a total of 599.08m for the 3rd Interstation tunnel (connecting Goudi Station and Zografou Station), resulting in an excavation progress percentage of 59.85%. Additionally, work has been completed on the installation of an extra belt on the existing conveyor belt, and the power supply cable for the TBM has been extended. The progress of the boring operations performed by TBM "ATHENA" from Katehaki Shaft to Evangelismos Trumpet Shaft—where the TBM will ultimately stop—stands at 37.07%.



TBM "ATHENA".

PROJECT: PRELIMINARY WORKS



ELIKONOS Station



MINISTRY OF
INFRASTRUCTURE AND
TRANSPORT



WITH CO-FINANCING OF GREECE AND THE EUROPEAN UNION

RELOCATION OF NETWORKS

Page 10



KYPSELI Station.

At KYPSELI Station, works for the diversion of the sewage network are currently underway. In contrast, all construction works at ILISSIA Station have been completed. At the same time, at EXARCHIA Station, the diversion of EYDAP and DEDDIE networks has commenced. In ZOGRAFOU Station, works for the diversion of OTE and natural gas networks are also in progress.

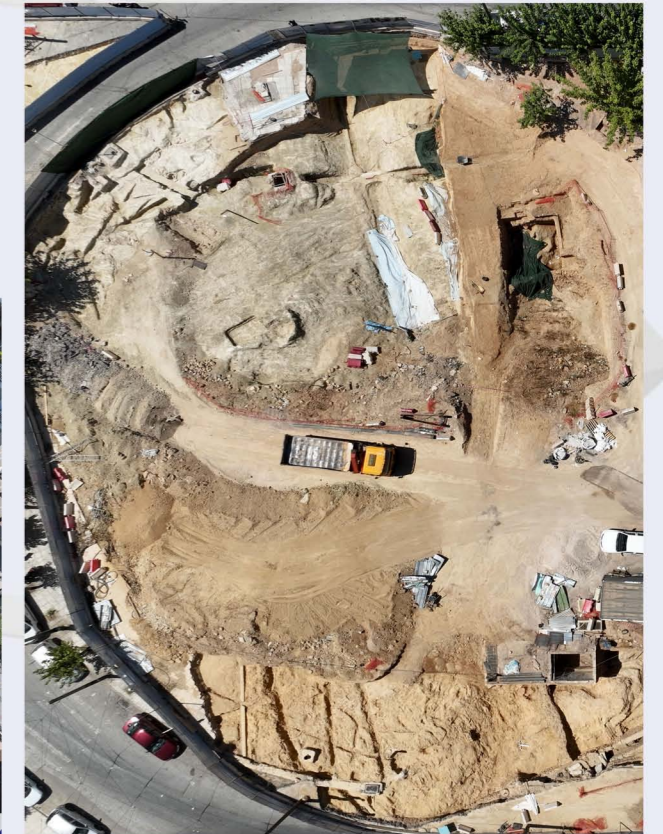
ARCHAEOLOGICAL WORKS

Page 11

Archaeological works are ongoing at KYPSELI, EXARCHIA, KESSARIANI, PANEPISTIMIOUPOLI, and ZOGRAFOU Stations, as well as at the AGHIOS THERAPONTAS Ventilation Shaft.



Archaeological works - ZOGRAFOU Station.



Archaeological works - KYPSELI Station.

ILLUSTRATION PRELIMINARY WORKS



Artistic enhancement of the worksite fencing - ELIKONOS Station.

For the first time, ELLINIKO METRO S.A. presents information about the execution of preliminary works in illustrated form. The aim of this initiative is to inform citizens in a more accessible, direct, and engaging manner, while also highlighting the construction-related challenges faced during the implementation of the Metro works. You can view the relevant booklet titled "PRELIMINARY WORKS OF LINE 4A" on the ELLINIKO METRO S.A. website or scan the provided QR code for easy access.

Additionally, snapshots from the illustrated booklet are displayed on the fencing of several worksites along Line 4A, including ALSOS VEIKOU Station, GALATSI Station, ELIKONOS Station, KYPSELI Station, KESSARIANI Station, Formionos Shaft, Near East Shaft, PANEPISTIMIOUPOLI Station, ZOGRAFOU Station, ILISSIA Station, and GOUDI Station.



ELLINIKO METRO S.A.



LINE

A LANDMARK PROJECT BECAMES REAL!

www.emetro.gr/grammi4

NEWSLETTER LINE 4A

LINE 4A PHOTOS
Savvas Spyridonos

**All photos used have been taken from the archives of ELLINIKO METRO S.A. (unless stated otherwise).*

***Cover page photo: VEIKOU TBM SHAFT.*

Contact us on: 210-6792065, 210-6792060 | E-mail: info@emetro.gr



Co-funded
by the
European
Union



MINISTRY OF
INFRASTRUCTURE
AND TRANSPORT